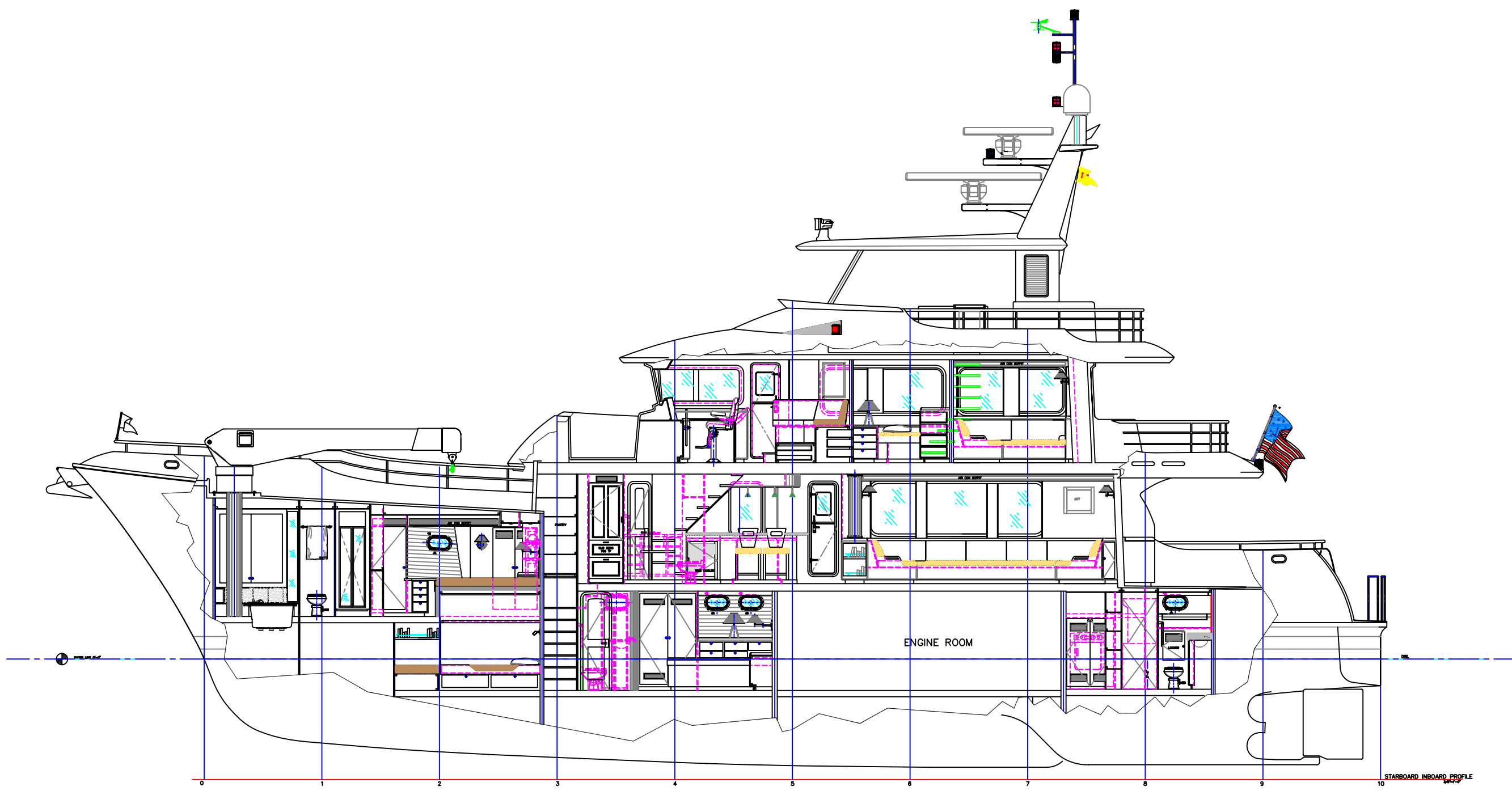


REVISIONS				
STATUS	REV	DESCRIPTION	DATE	REV BY
0		INITIAL ISSUE	10-14-04	JAL



STARBOARD INBOARD PROFILE



THIS PLAN REPRESENTS DETAILS AND DESIGN FEATURES AS ELEMENTS OF A DESIGN DEVELOPED BY PACIFIC ASIAN ENTERPRISES, INC. (P.A.E.) AND IS TO BE USED FOR WORK AUTHORIZED IN WRITING BY P.A.E. . ANY UNAUTHORIZED USE OR REPRODUCTION, IN PART OR IN WHOLE, WITHOUT THE WRITTEN CONSENT OF P.A.E. IS FORBIDDEN. ALL RIGHTS OF INVENTION AND DESIGN ARE RESERVED BY P.A.E. .

NORDHAVN 66 STARBOARD INBOARD PROFILE				
PACIFIC ASIAN ENTERPRISES				
PO BOX 674, AT-THE HARBOR, SANA POINT, CALIFORNIA 92088				
PH (408)465-0418 FAX (408)465-0288				
SIZE	HULL NO.	DESIGN NO.	NO. OF SHEETS	DRAWN BY
E	100	N66SP-0000	1	JAL
SCALE: 3/8"=1'-0" DATE: SEE ABOVE REV: SEE ABOVE SHEET: 1 OF 1				